

# Mineralogical Society of Western Australia

August 2001

Volume 2, Issue 4

FORWARD DIARY  
2001.

## President's Report

June was a busy month and both a profitable and enjoyable one. Activities included the Riverina fieldtrip, meeting and lecture as well as the Joint Societies Seminar in Hobart along with the W.A. Lapidary & Rockhunting Club Inc's exhibition all providing a variety of most stimulating experiences. The logo competition has been enthusiastically supported with a number of entrants some of whom have lodged multiple entries, good-luck to all who have entered.

I am pleased to announce a change of meeting venue to the W.A. Lapidary & Rockhunting Clubs clubrooms in Rivervale. We thank our common members and the Lapidary Club for their kind offer. As a result of my attendance at the Joint Societies Seminar I along with Beatie Smith have been able to arrange for visiting Professor of Geology Ray Grant of Arizona to give a lecture on the 15<sup>th</sup> of November at 7.30pm in the Lapidary Clubrooms, this is an opportunity not to be missed.

The Riverina fieldtrip was well attended. Our thanks go to Roger Lindsay the tene-ment holder and our host. The recent rains proved a boon by revealing the elusive green beryl that was relatively abundant. All of the ten members and guests collected samples along with other peg-

matite minerals. Numerous good specimens were found ranging from pale to dark green and up to 3cm in length. Probably the finest sample was unearthed by Jenny Bevan. The Menzies Hotel was as always warm and hospitable thanks go to Keith and his staff.

Hobart turned on typically Tasmanian weather for June but the delegates were undaunted. The seminar drew about 50 attendees from across the nation and beyond, re-acquaintance was made with old friends and new ones were made. The two days of lectures and the warm (maximum temp 8 degrees) and inviting venue at Rydges Hotel made for a most enjoyable weekend. Topics ranged from the extraterrestrial, the theme being 2001 a mineral odyssey, to the oxidation of base metal deposits, specimen gold from Papua New Guinea and minerals of New Zealand, N.S.W., Vic and Tas. Also interesting talks were presented on the Petterd and Howard Worner collections.

**August 1<sup>st</sup>**

**AGM**

Guest Speaker  
**Peter Clark.**

**October 3<sup>d</sup>**

Guest Speaker  
**Peter Bridge.**

**December 5<sup>th</sup>**

**Quiz Nite  
Social Evening.**

**Newsletter  
Contents.**

**Presidents report  
Inward Correspondence  
New Venue  
Logo Competition  
Mineral Software  
Hall of Fame  
Goldfields Heritage Trail  
Nickel on Nickel  
Mineral Notes  
Tuscon Show  
Micromount Corner**

**Inward  
Correspondence**

**The Mineralogical Society  
of N.S.W. June Newsletter**

The May meeting featured a mineral workshop, an interactive session in which members had the opportunity to identify a number of specimens using a range of criteria.

# Mineral Spelling Dictionary

I've been working on a custom spelling dictionary of mineral terms for some time now, building it from a variety of sources, including the new Fleischer Glossary of Mineral species. I'm also including common mineral variety names, locality names, mineralogical terms, and more. This file is a work in progress...always, and I'll update it here from time to time. It's a start, though.

## Who It's For

The dictionary is designed for use in all Microsoft word processing, spreadsheet, and other Microsoft software, such as FrontPage, which uses the file *custom.dic* as an additional spelling dictionary. It is a simple text file with that name, so other programs which use pure text files may also be able to use it with adaptation.

## How To Get It

To download the file, click the link below the descriptive text here. When your browser prompts you to Open or Save the file, be sure to select the Save option. Different browsers have different prompts for this, but the goal is to store the file on your hard drive.

## How To Use It

All Microsoft programs which can use a custom dictionary use the same filename for that dictionary, *custom.dic*. Follow the steps below carefully to enable the file on your PC.

On your PC, locate the copy of *custom.dic* being used on your PC by the Microsoft software.

To do this, either search for the file in the Windows Explorer program or, if you're using Word, select **Tools\*\*Options**, then click the **File Location** tab in the Options toolbox and note the location for the dictionary, which is usually in a directory named **Proofing**.

Using Windows Explorer, or another method, rename the existing *custom.dic* file to *custom.bak*.

Copy the *custom.dic* file you just downloaded from this site into the directory where the old *custom.dic* file, used by Microsoft programs, was.

**NOTE:** If you had added many words to your own custom dictionary and want them to still be part of your spell checking, open the new *custom.dic* file in Notepad, then run Notepad a second time and open the *custom.bak* file you created in step 2. Click and drag over all words in the *custom.bak* file, then select **Edit\*Copy** to copy them to the clipboard. Switch to the copy of *custom.dic* you have loaded, and select **Edit\*Paste** to add the old list to your the dictionary. Be sure to save the *custom.dic* file.

To get this software go to this link below.

<http://www.osomin.com/spelling.htm>

## MINERAL NOTES

### BioHeap Process Fate For 132 North Mine .

Junior nickel miner Titan Resources plans to use the BioHeap bacteria process to speed up the natural leaching recover of base metals from sulphide ores at the 132 North Mine.

The 132 North Mine has produced a vast array of secondary nickel minerals and is the Type Locality for widgiemoolthalite. Other minerals of significance to collectors are paratacamite, hydrohonessite, gaspeite, annabergite, nullagininite and carrboydite.

The deposit has massive sulphide resources of 282,262 tonnes at 3.45% nickel and will potentially provide Titan Resources with an early cash flow and will fill the gap when the Radio Hill Mine, near Karratha runs out of ore next year.

Titan Resources believe that the North Widgiemooltha Block is ideal for bacterial leaching, whereas conventional mining and processing may not be feasible on the entire project.

*(Source: The West Australian, 11 July, 2001)*

\*\*\*\*\*

### WESTERN AUSTRALIAN MINERALS FEATURE AT TUCSON SHOW 2001

The report on the Tucson Mineral Show in the May-June issue of The Mineralogical Record devotes considerable attention to chalcocite

crystals from the Telfer Gold Mine. The crystals available at the Show were labelled "world's best".

The Show Reporter describes the crystals as "greatly elongated, supersharp, upstanding cruciform twin, the two long blades penetrating each other at close to 90°. These are metallic black and brilliantly lustrous, untarnished, although there is some slight malachite staining here and there."

The final sentence of the report is enough to make a grown collector cry. 'The best of the thumbnails were priced from \$2000 to \$3000 (Ed. That is U.S. dollars !!). ..... and it's a measure of the quality of the stuff that some experienced hands were willing to pay these prices.'

Subsequently, the AJM reported on the availability of the crystals with the cautionary note that Newcrest Pty Ltd allege the material was obtained illegally. Reportedly the Western Australian Gold Squad has confiscated all specimens (except, presumably the material in America) and is investigating on behalf of the Company.

.....

### A MICROMOUNTER'S DELIGHT

Simpson records a number of wulfenite localities in the State. While the occurrence of wulfenite at Uaroo has been briefly mentioned in several publications, the crystals do not match the superb crystals from Whim Creek. Nevertheless, the Uaroo wulfenites produce an excellent micro exhibiting tabular crystals of a mid orange hue. The micro pyromorphites from the same locality are equally attractive.

## HALL OF FAME IN KALGOORLIE NEARS COMPLETION

The Australian Prospectors and Miners Hall of Fame has progressed from being a brilliant idea to scaffolding, girders, concrete and steel. As the building moves towards the completion date, world class displays are being put together that will impact on the next generation of Australians.

It is expected that at least 250,000 visitors will tour the complex each year and many more will make a virtual visit to the Centre.

The Hall of Fame is designed around five major galleries:

- Prospecting Gallery
- Business of Mining Gallery
- Mining in Context Gallery
- Petroleum Gallery
- Geology and Minerals Function Gallery

The exhibits are being developed by a team of leading designers in partnership with researchers, museum consultants and major gallery and exhibit sponsors.

The Hall of Fame will be an impressive venue for the 2005 Combined Mineralogical Societies conference to be hosted by the Mineralogical Society of Western Australia (Inc).

## GOLDFIELDS HERITAGE TRAIL PLANNED

Plans to establish a 975 km Goldfields North Heritage Trail have been helped by a \$126,500 boost from the Federal government.

The trail is to be a two to three day drive using the existing road network but with several four-wheel drive options suitable for both self-drive and guided tour visitors.

The trail will connect the communities of Kalgoorlie-Boulder, Menzies, Kookynie, Leonora, Laverton, Broad Arrow, Ora Banda and Coolgardie.

The Federal Member for Kalgoorlie, Barry Haase said he believed the concept will make a tremendous contribution to tourism in the area and ensuring the history of the region is kept alive.

*(Extract from the Golden Mail, 15 June, 2001)*

## NICKEL ON NICKEL

The Society's July Guest Speaker was the internationally recognised mineralogist, Dr. Ernest H. Nickel. Dr. Nickel's career as a mineralogist and earth scientist is long and distinguished, particularly in the area of the mineralogy and genesis of economic mineral deposits in Canada and Australia. Dr. Nickel has devoted considerable time to the formalisation of mineral systematics in connection with his long term appointment to the Commission of New Minerals and mineral names, International Mineralogical Association.

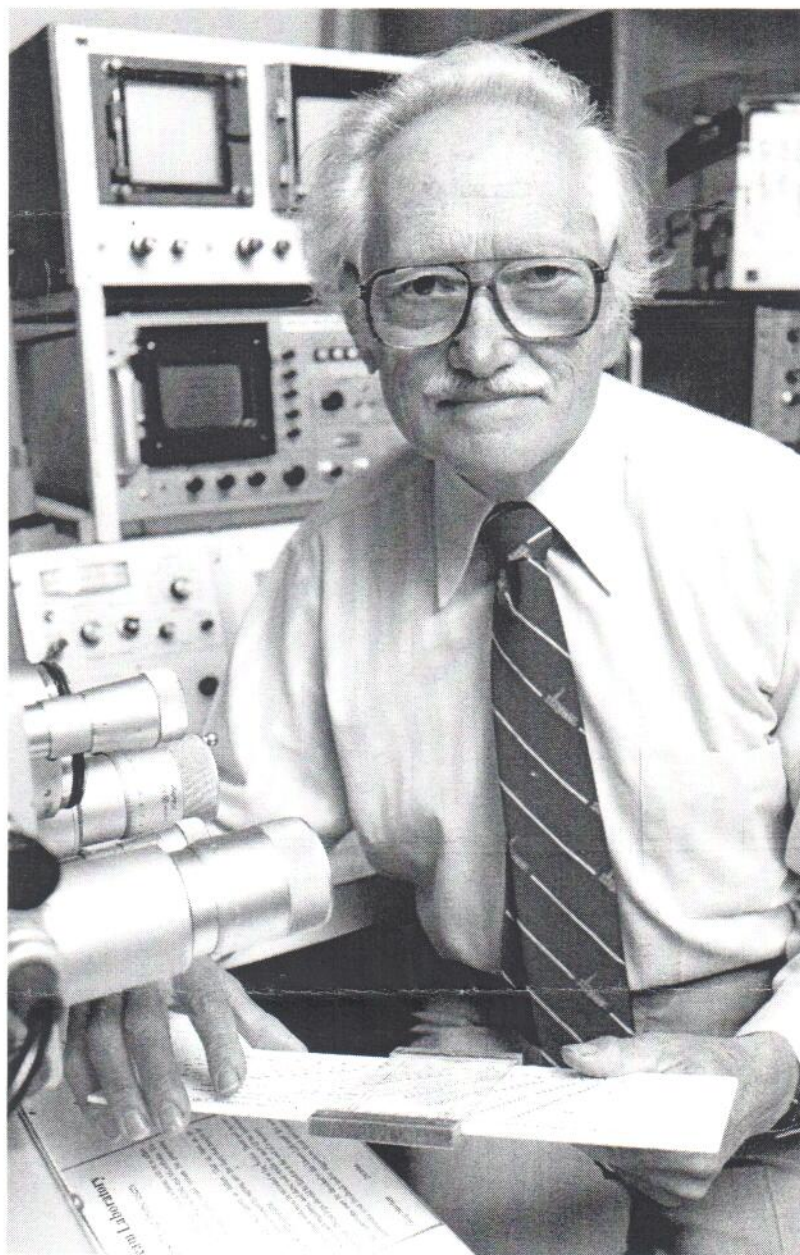
Ernie has published extensively either as the principal author or as a collaborator in leading mineralogical journals. The Mineral Reference reference on any collector's bookshelf. It is unfortunate that the book is currently out of print.

In 1994, a new nickel manganese oxide was named ernienickelite in honour of Ernie. Ernienickelite occurs as small (micro) thin. Almost circular reddish-black to black platy crystals. Under magnification the crystals exhibit a dark plum red colour with a submetallic to vitreous lustre. In situ, the mineral is found in cavities in quartz in a nickel and cobalt rich laterite body. Nontronite, nimite, magnesite and goethite are associated minerals.

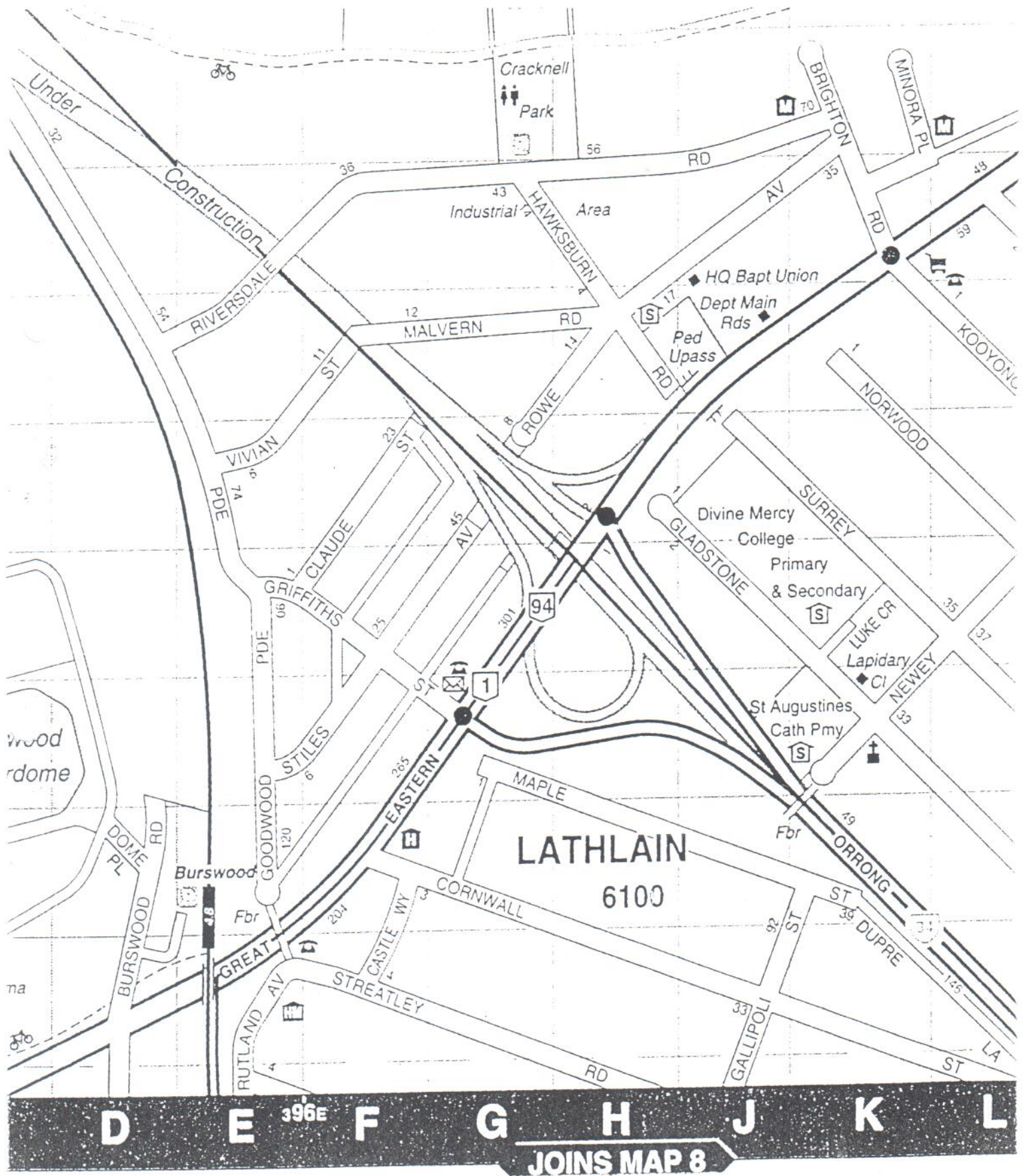
Ernie titled his July lecture "Nickel on Nickel" and provided members with a well illustrated discussion on the broad geology of the nickel regions of Western Australia and a description of some of the more interesting primary and secondary nickel minerals. For many members it was the first opportunity to closely examine some of the rarer secondary nickel minerals from the 132 North Mine.

At question time, Ernie was asked

why the mineral widgiemoolthalite was spelt with "lite" instead of widgiemoolthaite. Apparently the Mineral Commission thought Widgiemoolthaite is too hard to pronounce so widgiemoolthalite was suggested as an alternative and accepted by the author. The Society is indebted to Ernie for his contribution to the Society's activities and assistance to mineral collectors in Western Australia.



## New Meeting Venue



# MINERALOGICAL SOCIETY OF WESTERN AUSTRALIA (INC)

## Office Bearers:

President: Peter Clark  
34 McDonald Street,  
Como, W.A. 6152 Tele. (08) 93681778 (h)

Vice President: Jeffrey Manners  
58 Berkley Road,  
Marangaroo, W.A. 6064 Tele. (08) 93428648 (h)

Secretary Treasurer: John Reeve  
13 Buchan Place,  
Hillarys, W.A., 6025 Tele. (08) 9401 1963 (h)

Field Trip Coordinator: Mark Jacobsen  
11 Robin Street,  
Menora, W.A. 6050 Tele. (08) 92728792 (h)

## Membership Details:

Joining Fee	\$5.00
Adult Member	\$20.00
Newsletter only	\$15.00

An application form for membership can be obtained by writing to: -  
The Secretary, J. Reeve  
Mineralogical Society of Western Australia (Inc)  
13 Buchan Place, Hillarys, W.A. 6025

Ordinary meetings of the Society are held on the 1st Wednesday in February, April, June, August, October and December in the W.A. Lapidary and Rock Hunting Club rooms 31 Gladstone Street Rivervale, commencing at 7.30pm. The January meeting will involve social activities at a time and place to be notified.

Visitors are most welcome

*Email*

---

Newsletter of the Mineralogical Society of Western Australia  
13 Buchan Place, Hillarys, 6025  
Western Australia, Australia

Material used in this Newsletter is subject to copyright, however unless specifically reserved, material may be used in Australian Mineralogical Society Newsletters with appropriate acknowledgement of the author and source.

*AME West Perth*  
*Ex Min Names*

*Heischers*

*Newsletter Geoff Manners*  
*geoff.manners@pormus.com.au*

*Danas Mineral*  
*Intro of Rock Forming Minerals*